

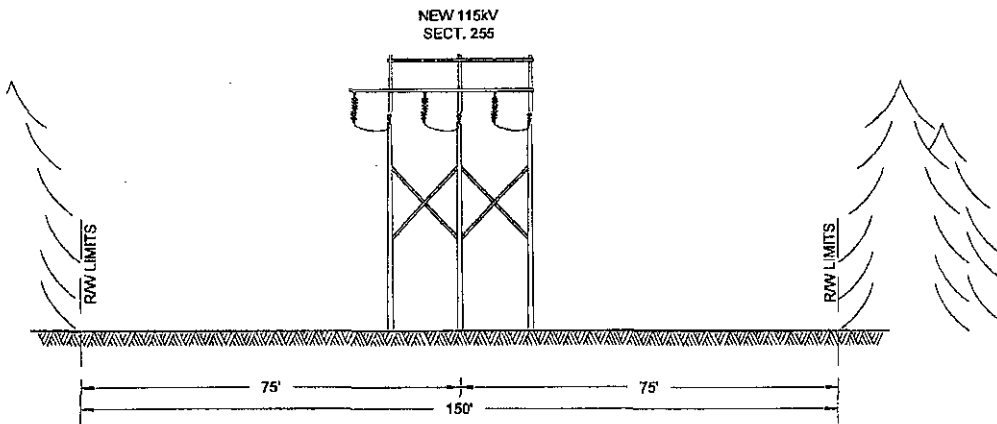
THIS DRAWING SHALL BE REVISED ON THE CAD/D SYSTEM ONLY

FOR REVIEW ONLY
NOT FOR CONSTRUCTION

				CENTRAL MAINE POWER COMPANY NEW 115KV SECTION 255 GULF ISLAND S/S - MIDDLE STREET S/S R/W CROSS SECTIONS			
0	ISSUED FOR REVIEW	01/02/08	LEP	DESIGNED DRAWN	LEP RDW	CHCK. — APPR. —	DATE 01/02/08 REVIEWED
NO.	REV.	DATE	BY	TRC 249 Western Avenue Augusta, Maine 04330		155636-T0001-SH4	
CLIENT APPROVAL APPROVED BY COMPANY DATE ---				CONTRACT DWG NO. 155636-T0001-SH4.DWG		PROJECT NO. 155636	

SEGMENT 5

LOOKING SOUTHEAST
 APPROXIMATE LENGTH 2450'
 (RIVER CROSSING)



THIS DRAWING SHALL BE REVISED ON THE CAD SYSTEM ONLY

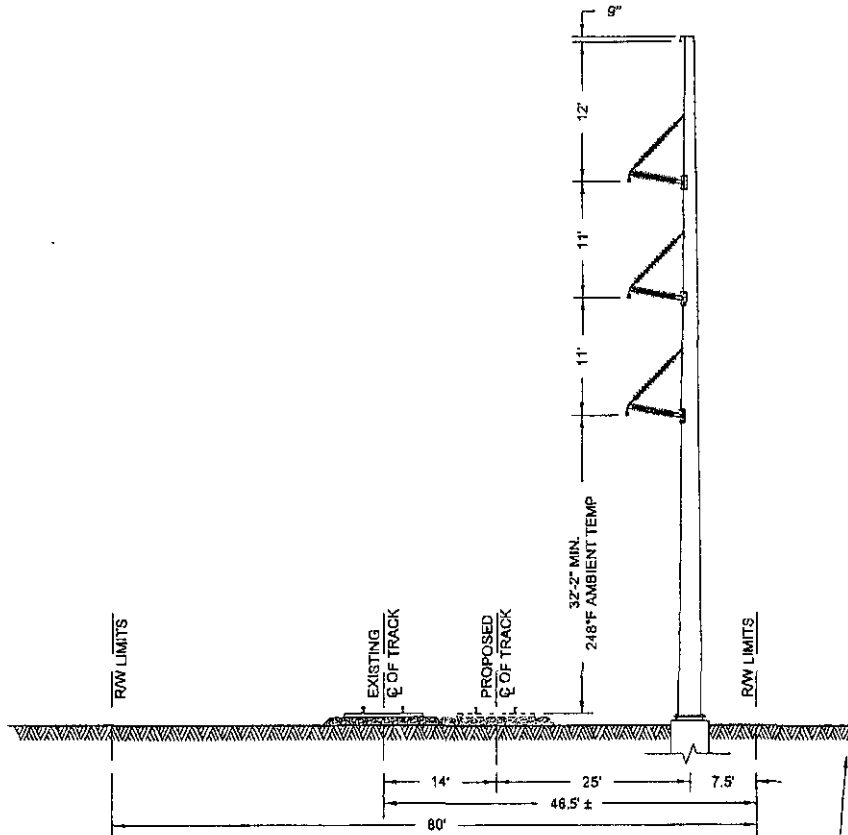
FOR REVIEW ONLY
NOT FOR CONSTRUCTION

				CENTRAL MAINE POWER COMPANY NEW 115kV SECTION 255 GULF ISLAND S/S - MIDDLE STREET S/S R/W CROSS SECTIONS			
0	ISSUED FOR REVIEW	01/02/08	LEP	DESIGNED DRAWN	LEP RDW	CHK. APPR.	DATE REVIEWED
NO.	REV.	DATE	BY			—	01/02/08
CLIENT APPROVAL APPROVED BY COMPANY DATE				TRC 249 Western Avenue Augusta, Maine 04330		155636-T0001-SH5	
				CONTRACT DWG NO. 155636-T0001-SH5.DWG		PROJECT NO. 155636	

SEGMENT 6

LOOKING SOUTHWEST
 APPROXIMATE LENGTH 4750'

NEW 115kV
 SECT. 255



FOR REVIEW ONLY
 NOT FOR CONSTRUCTION

ADDITIONAL RIGHTS
 AS REQUIRED

THIS DRAWING SHALL
 BE REVISED ON THE
 CADD SYSTEM ONLY

1	ISSUED PER PAN A14	08/24/08	LEP
2	ISSUED FOR REVIEW	07/02/08	LEP
1	ISSUED FOR REVIEW	04/09/08	LEP
0	ISSUED FOR REVIEW	01/02/08	LEP

CENTRAL MAINE POWER COMPANY
 NEW 115kV SECTION 255
 GULF ISLAND S/S - MIDDLE STREET S/S
 R/W CROSS SECTIONS

NO. REV. DATE BY
 CLIENT APPROVAL
 APPROVED BY
 COMPANY
 DATE -/-/-

DESIGNED LEP
 DRAWN ROW
 CHCK. ---
 APPR. ---

DATE 04/09/08
 REVIEWED



TRC
 249 Western Avenue
 Augusta, Maine 04330

155636-T0001-SH6

CONTRACT DWG NO.
 155636-T0001-SH6.DWG

PROJECT NO.
 155636