

**CENTRAL MAINE POWER COMPANY
RESPONSE TO ORAL DATA REQUEST NO. 3
DOCKET No. 2008-255**

December 17, 2008

ODR-03-42

Q. Please provide EMF modeling for Segment 16 DCT in Bowdoinham.

A. Please see Attachment 1.

Response Prepared and Submitted By:

William H. Bailey, Ph.D.
Principal Scientist and Office Director
Exponent

Attachment(s):

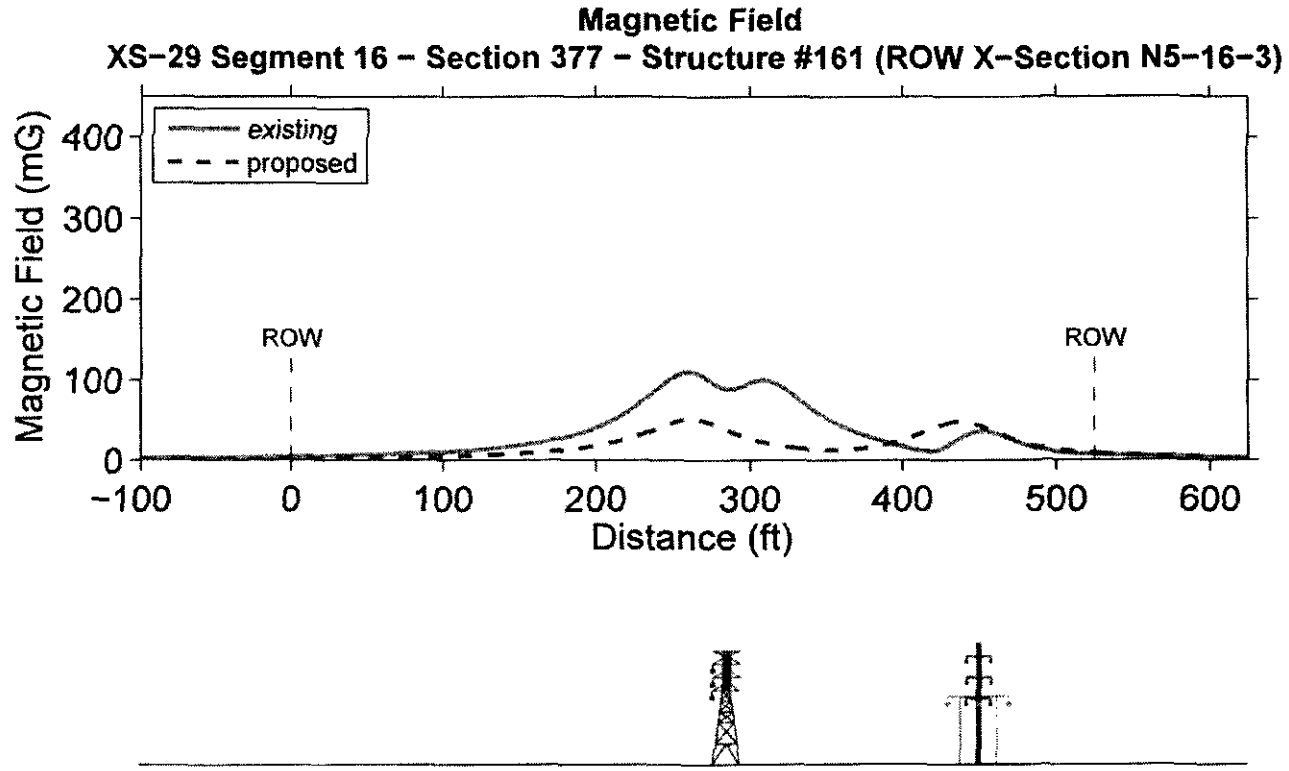
1. MPRP Average Load EMF and AN Segment 16

Maine Power Reliability Project, Segment 16

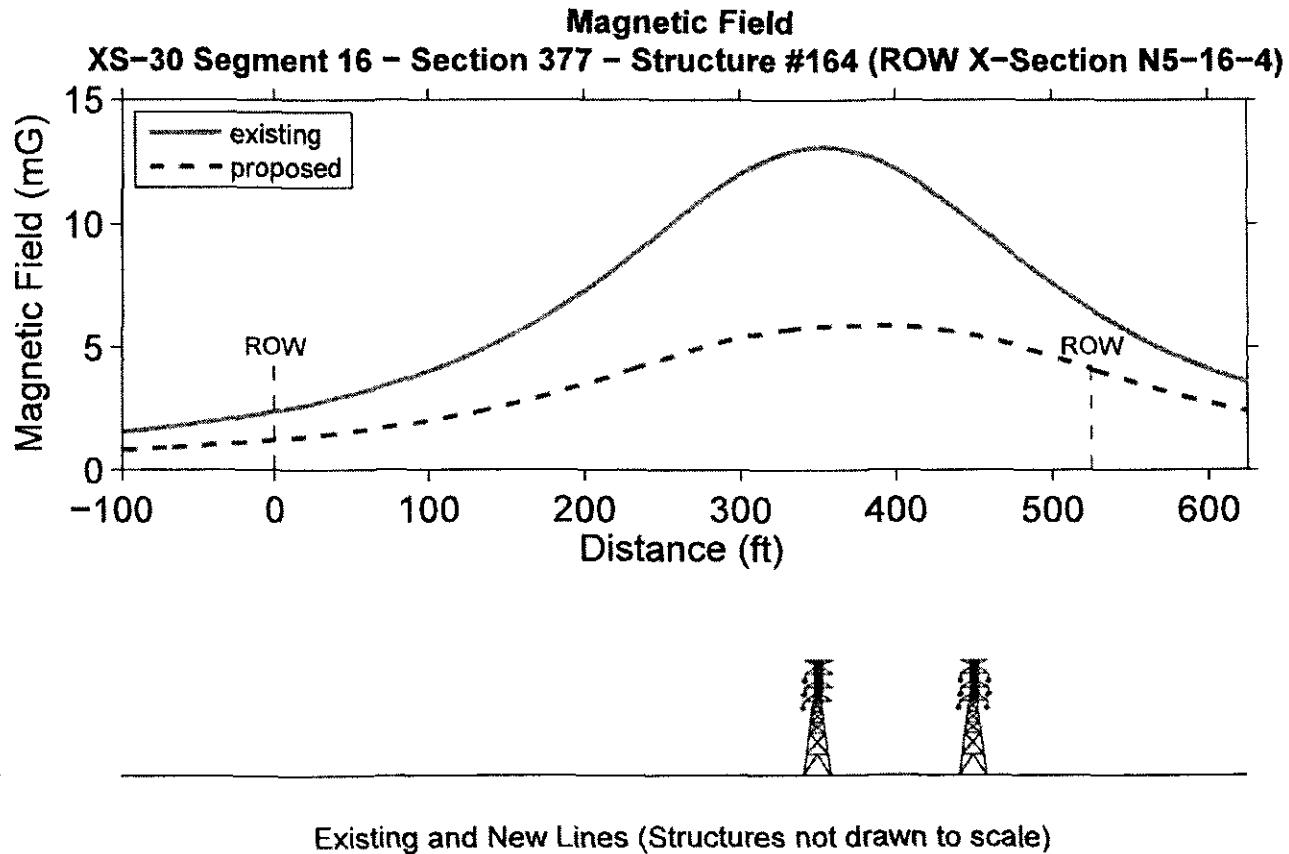
Profiles and Summary Tables

Prepared on December 16, 2008.

Magnetic Fields



Existing and New Lines (Structures not drawn to scale)

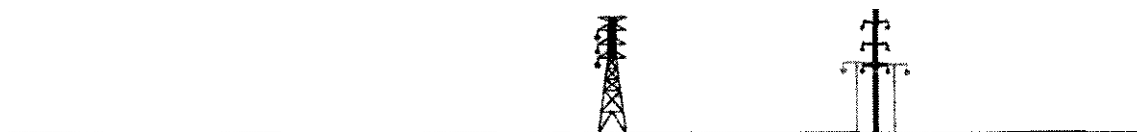
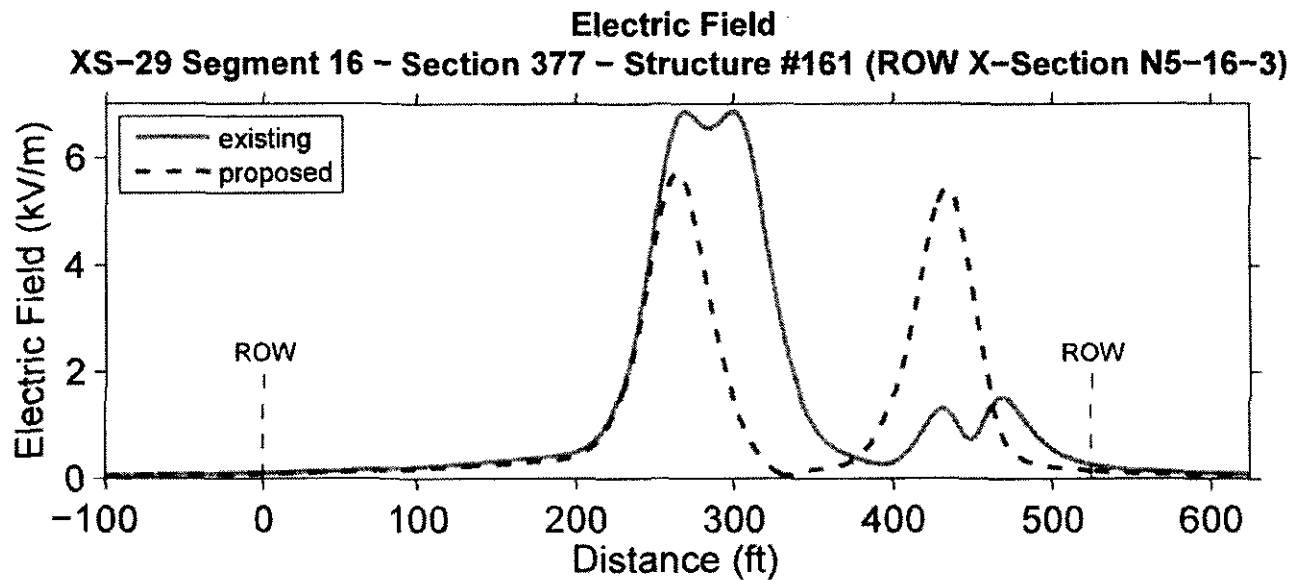


MPRP Average Load – December 16, 2008

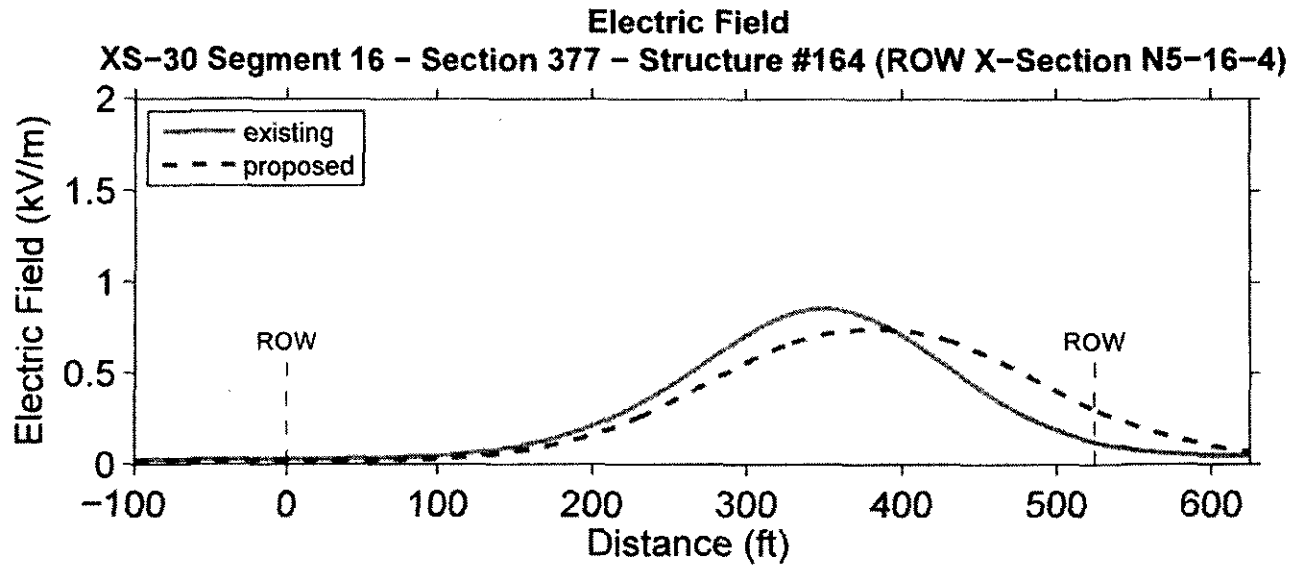
Line Section	Configuration	MAGNETIC FIELD (mG) AT LOCATION		
		-ROW edge	Maximum on ROW	+ROW edge
XS-29 Segment 16 - Section 377 - Structure #161 (ROW X-Section NS-16-3)	existing	4.1	109.8	6.3
	proposed	1.8	50.7	8.4
XS-30 Segment 16 - Section 377 - Structure #164 (ROW X-Section NS-16-4)	existing	2.4	13.1	6.5
	proposed	1.2	5.9	4.1

MPRP Average Load – December 16, 2008

Electric Fields



Existing and New Lines (Structures not drawn to scale)



Existing and New Lines (Structures not drawn to scale)

MPRP Average Load – December 16, 2008

Line Section	Configuration	ELECTRIC FIELD (KV/m) AT LOCATION		
		-ROW edge	Maximum on ROW	+ROW edge
XS-29 Segment 16 - Section 377 - Structure #161 (ROW X-Section N5-16-3)	existing	0.10	6.85	0.26
	proposed	0.08	5.73	0.15
XS-30 Segment 16 - Section 377 - Structure #164 (ROW X-Section N5-16-4)	existing	0.03	0.86	0.12
	proposed	0.02	0.75	0.30

MPRP Average Load – December 16, 2008

Audible Noise

MPRP Average Load – December 16, 2008

Line Section	Configuration	AUDIBLE NOISE (dBA)			
		FAIR WEATHER		FOUL WEATHER	
		-ROW edge	+ROW edge	-ROW edge	+ROW edge
XS-29 Segment 16 - Section 377 - Structure #161 (ROW X-Section NS-15-3)	existing	18.3	19.1	43.3	44.1
	proposed	18.1	22.3	43.1	47.3
XS-32 Segment 16 - Section 377 - Structure #164 (ROW X-Section NS-16-4)	existing	15.8	16.1	40.9	43.1
	proposed	15.7	18.5	40.7	43.5

f. 0, i.e. below threshold of hearing