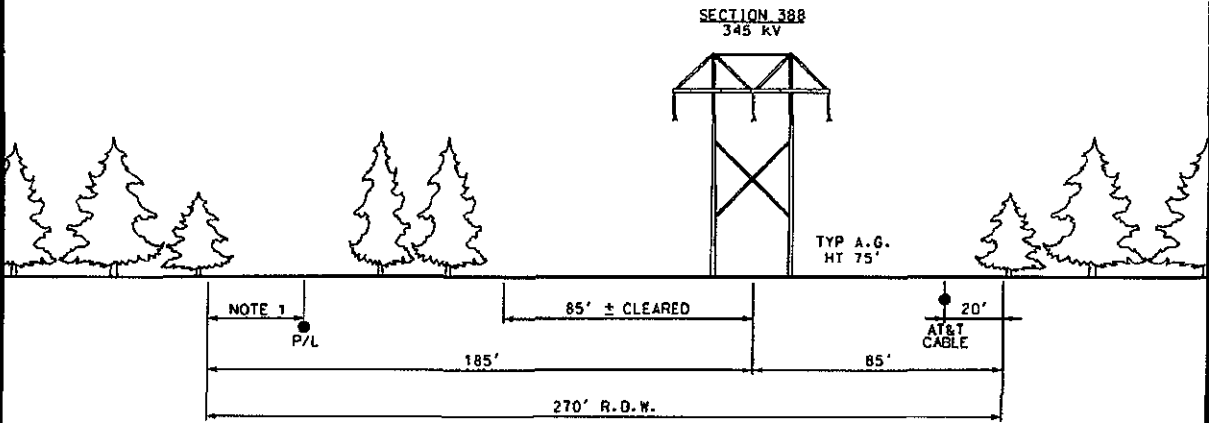


NOTE 1: GAS PIPELINE LOCATION
VARIES ALONG R.O.W.

EXISTING

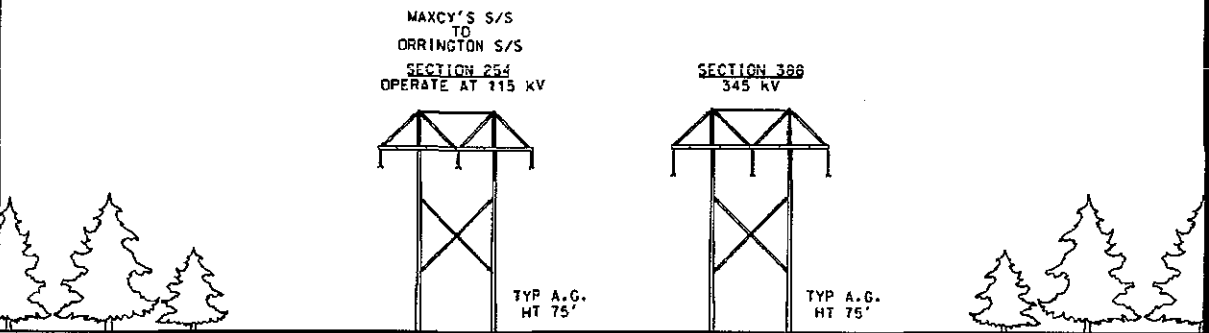


LIMIT
R.O.W.

LOOKING FROM MAXCY'S S/S TOWARDS ORRINGTON S/S
(APPROX. 30 MILES)

LIMIT
R.O.W.

PROPOSED



LIMIT
R.O.W.

LOOKING FROM MAXCY'S S/S TOWARDS ORRINGTON S/S
(APPROX. 30 MILES)

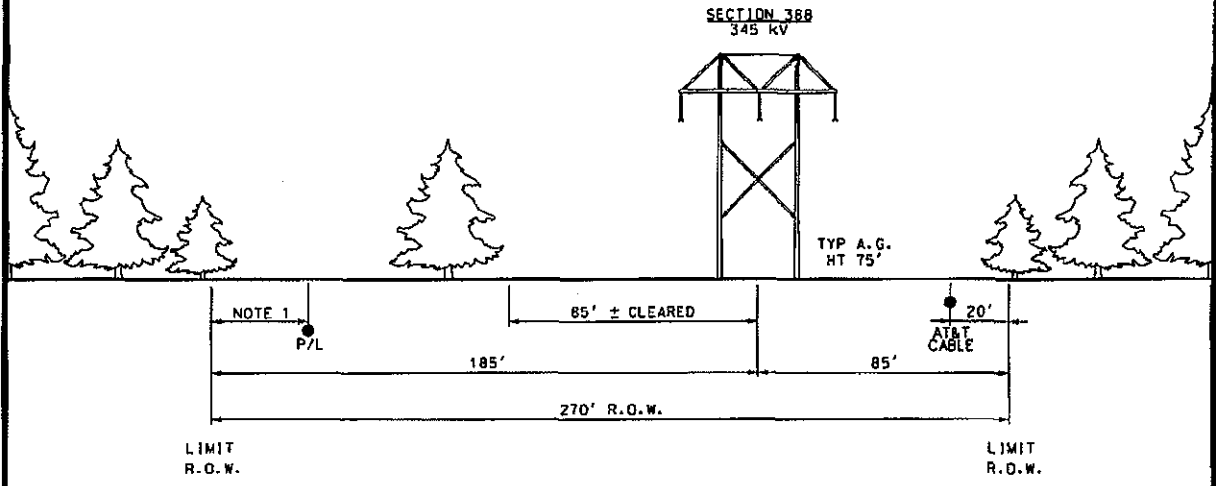
LIMIT
R.O.W.

THIS DRAWING SHALL
BE REVISED ON THE
CADD SYSTEM ONLY

-DRAFT- FOR REVIEW ONLY				SECTION 388		POLE 7 TO 274		STA. 1394+00 TO 2981+72	
MAINE POWER RELIABILITY PROGRAM									
EXISTING AND PROPOSED R.O.W.									
ALTERNATIVE N5 FOR N-1-1 ANALYSIS									
		CHECKED		DESIGNED		DATE		SEGMENT 6	
		SGW 09/13/07		KJF KGH		08/27/07			
						APPR.			
B		ADDED SECTION NO.		04/11/08		PEI		CENTRAL MAINE POWER CO.	
A		ISSUED FOR REVIEW		09/28/07		PEI			
NO.		REVISION		DATE BY		SCALE		SHEET N5-6-2	
						NTS			

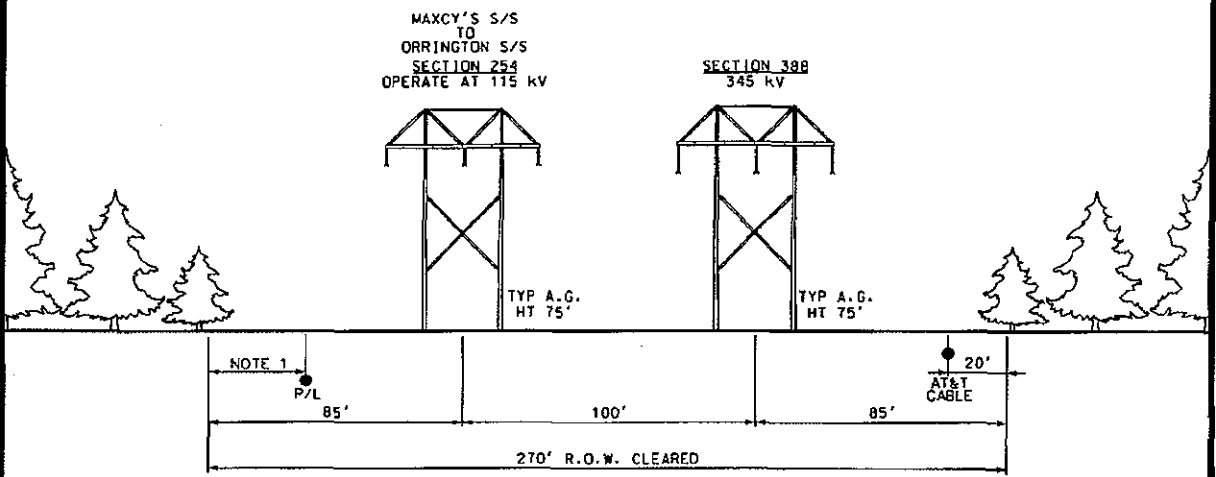
NOTE 1: GAS PIPELINE LOCATION
VARIES ALONG R.O.W.

EXISTING



LOOKING FROM MAXCY'S S/S TOWARDS ORRINGTON S/S
(APPROX. 8.9 MILES)

PROPOSED

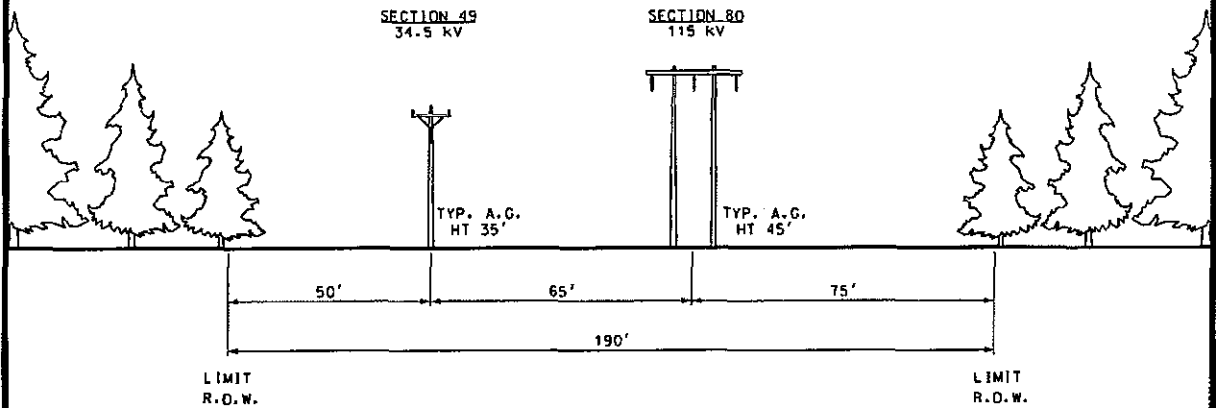


LOOKING FROM MAXCY'S S/S TOWARDS ORRINGTON S/S
(APPROX. 8.9 MILES)

THIS DRAWING SHALL
BE REVISED ON THE
CADD SYSTEM ONLY

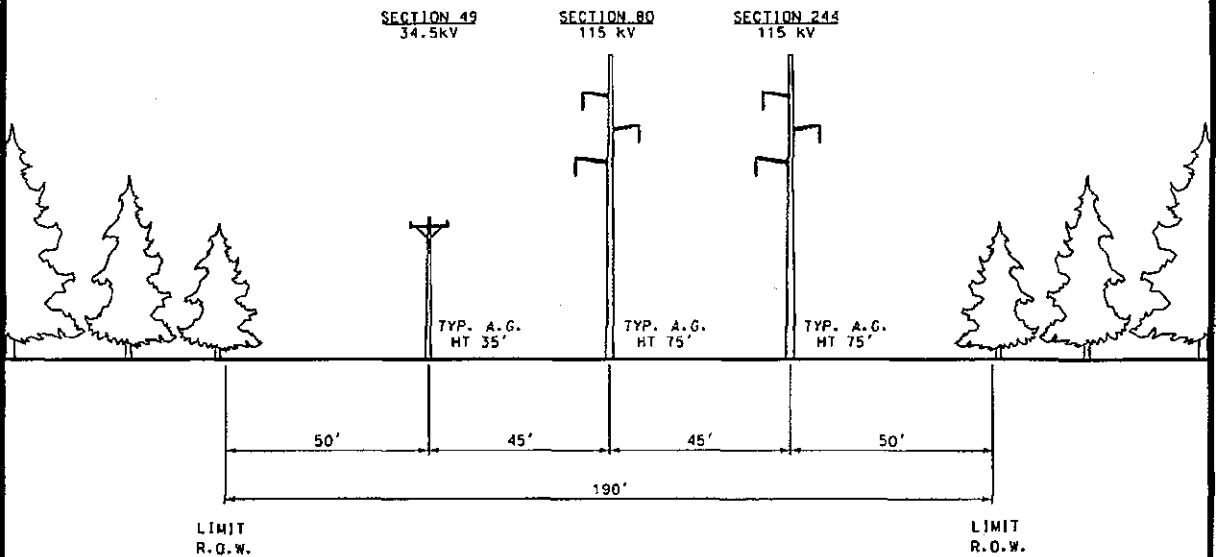
-DRAFT- FOR REVIEW ONLY				SECTION 388		POLE 274 TO 352		STA. 2981+72 TO 3449+70	
ENG. CONTRACTOR				MAINE POWER RELIABILITY PROGRAM					
				EXISTING AND PROPOSED R.O.W.					
				ALTERNATIVE N5 FOR N-1-1 ANALYSIS					
				CHECKED		DESIGNED		DATE	
				SGW		KJF		08/27/07	
				09/13/07		KGH		APPR.	
				CENTRAL MAINE POWER CO.					
				TRANSMISSION ENGINEERING					
				SEGMENT 4					
				SHEET N5-4-1					
NO. REVISION		DATE BY		SCALE		NTS			

EXISTING



LOOKING FROM MAXCY'S S/S TOWARDS HIGHLAND S/S
(APPROX. 2.3 MILES)

PROPOSED

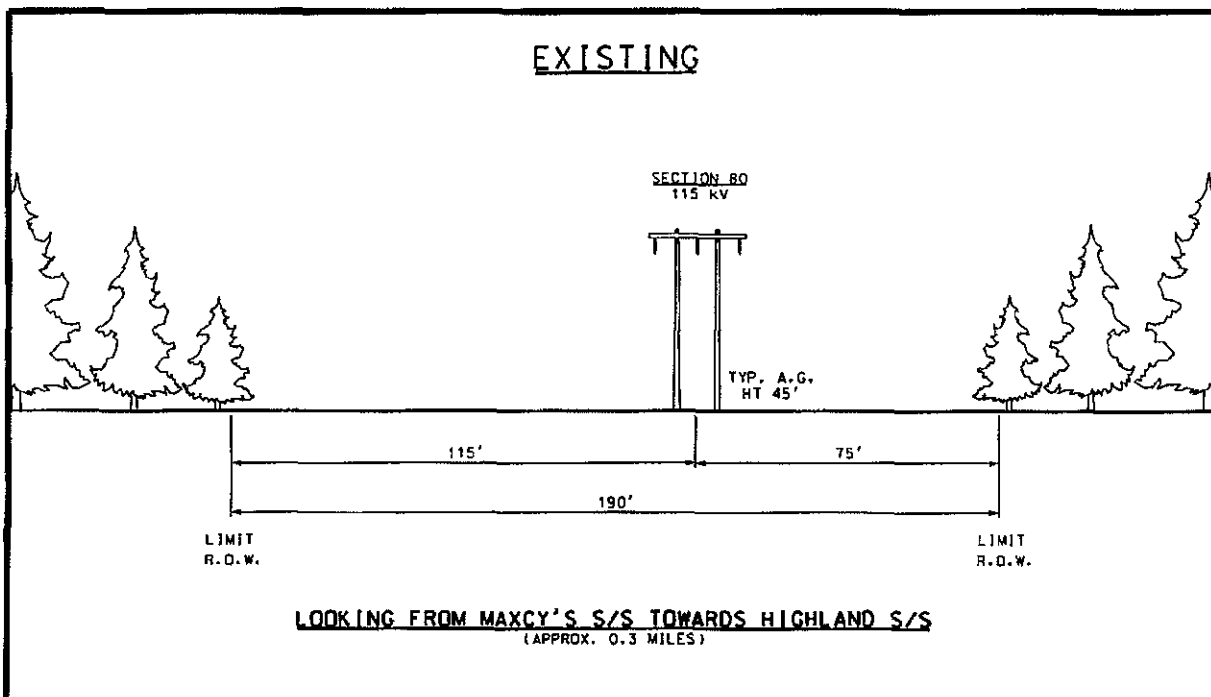


LOOKING FROM MAXCY'S S/S TOWARDS HIGHLAND S/S
(APPROX. 2.3 MILES)

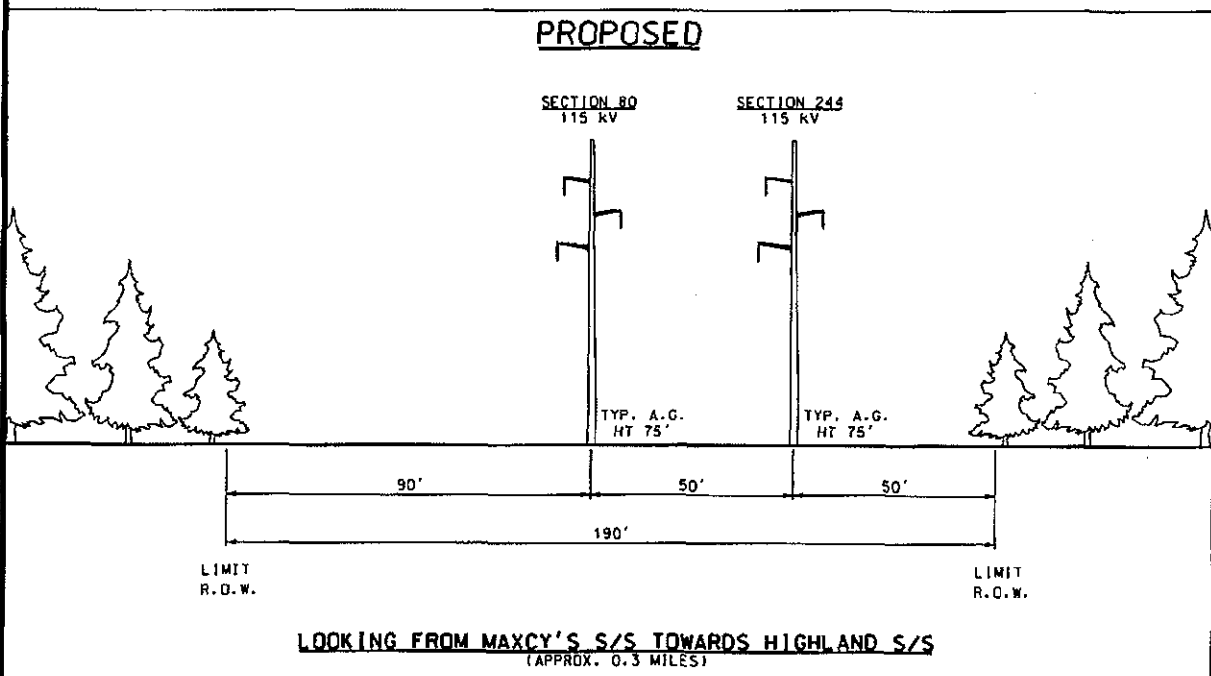
THIS DRAWING SHALL BE REVISED ON THE CADD SYSTEM ONLY

-DRAFT- FOR REVIEW ONLY				SECTION 80		POLE 3 TO 28		STA. 11+77 TO 135+19	
				MAINE POWER RELIABILITY PROGRAM					
ENG. CONTRACTOR				EXISTING AND PROPOSED R.O.W. ALTERNATIVE N5 FOR N-1-1 ANALYSIS					
				CHECKED		DESIGNED		DATE	
				SGW		KJF		8/21/07	
				3/04/08		KGH		APPR.	
A ISSUED FOR REVIEW 3/10/08 PEI				CENTRAL MAINE POWER CO.					
				TRANSMISSION ENGINEERING					
NO. REVISION DATE BY SCALE NTS				SEGMENT 35					
								SHEET N5-35-3	

EXISTING



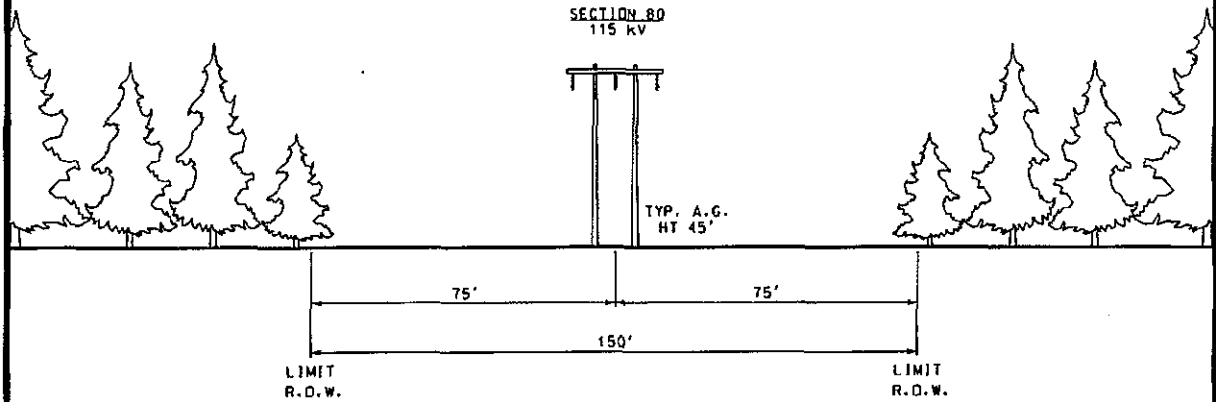
PROPOSED



THIS DRAWING SHALL BE REVISED ON THE CADD SYSTEM ONLY

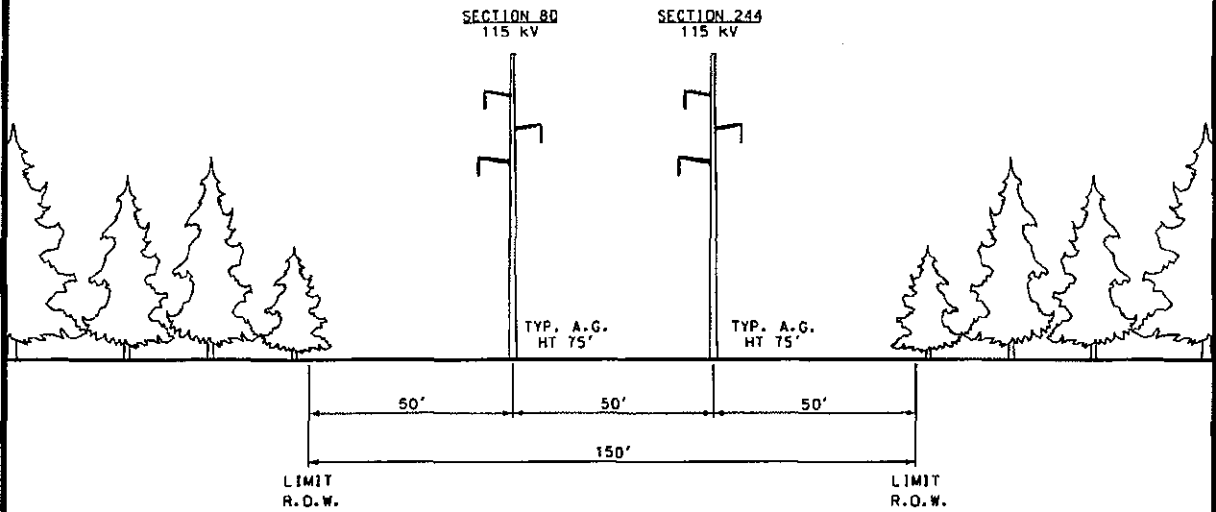
-DRAFT- FOR REVIEW ONLY				SECTION 80	POLE 28 TO 31	STA. 135+19 TO 151+30
MAINE POWER RELIABILITY PROGRAM				EXISTING AND PROPOSED R.O.W. ALTERNATIVE N5 FOR N-1-1 ANALYSIS		
ENG. CONTRACTOR						
CHECKED				DESIGNED	KJF	DATE 8/21/07
SGW				3/04/08	DRAWN	KGH
ISSUED FOR REVIEW				3/10/08	PD	
NO. REVISION				DATE	BY	SCALE
SCALE				NTS	CENTRAL MAINE POWER CO. TRANSMISSION ENGINEERING	
SEGMENT 35						SHEET N5-35-4

EXISTING



LOOKING FROM MAXCY'S S/S TOWARDS HIGHLAND S/S
(APPROX. 19.1 MILES)

PROPOSED



LOOKING FROM MAXCY'S S/S TOWARDS HIGHLAND S/S
(APPROX. 19.1 MILES)

THIS DRAWING SHALL BE REVISED ON THE CADD SYSTEM ONLY

-DRAFT- FOR REVIEW ONLY			SECTION 80	POLE 31 TO S/S	STA. 151+30 TO 922+55.5+4+07.0 STA. 922+55.5+4+07.0 TO 231+51.9
ENG. CONTRACTOR			MAINE POWER RELIABILITY PROGRAM		
			EXISTING AND PROPOSED R.O.W. ALTERNATIVE N5 FOR N-1-1 ANALYSIS		
			CHECKED	DESIGNED	DATE
			SGW	KJF	8/21/07
			3/04/08	KGH	APPR.
			CENTRAL MAINE POWER CO.		
			TRANSMISSION ENGINEERING		
			SEGMENT 35		
NO.	REVISION	DATE	BY	SCALE	SHEET N5-35-5
A	ISSUED FOR REVIEW	3/10/08	PEI	NTS	